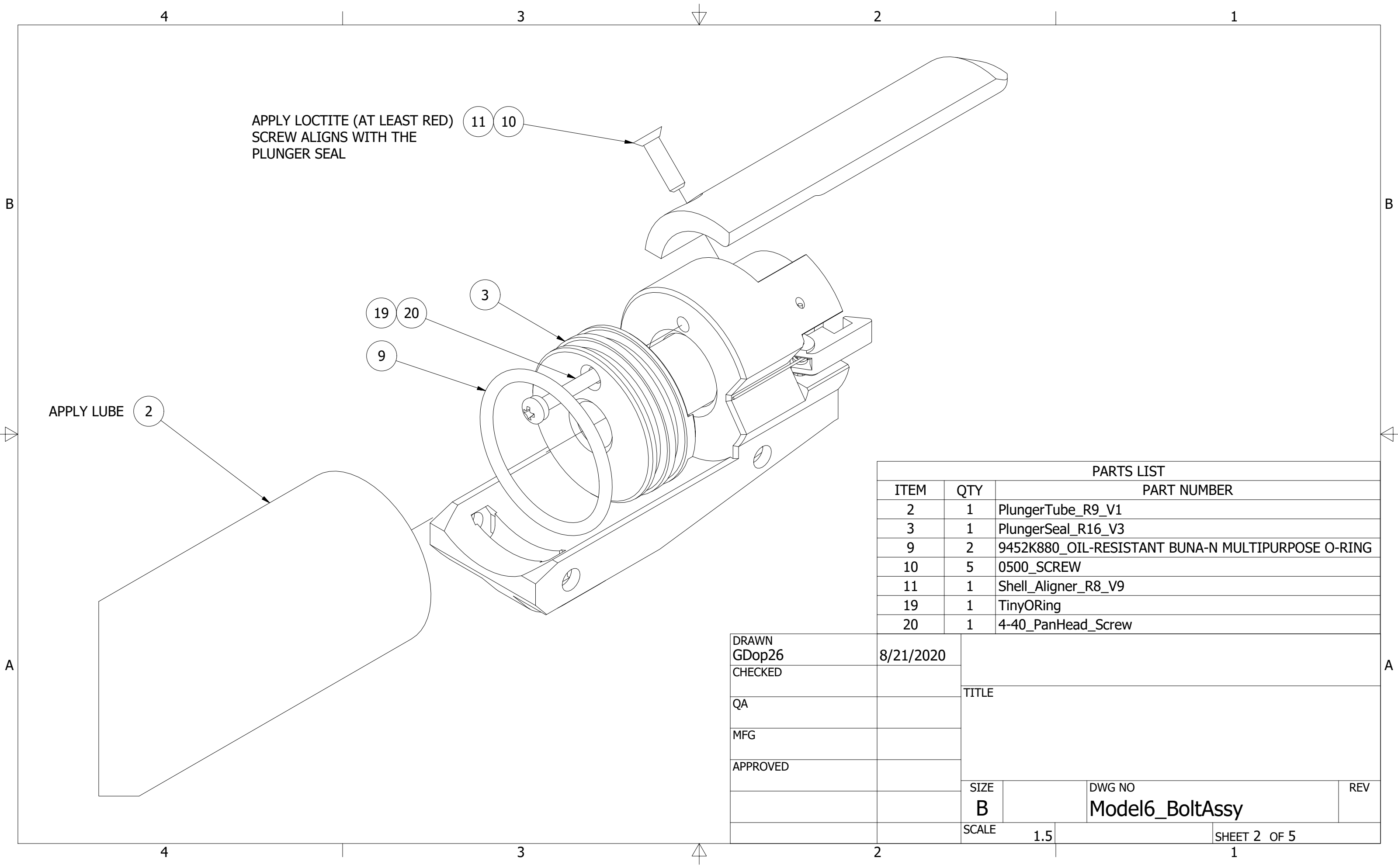


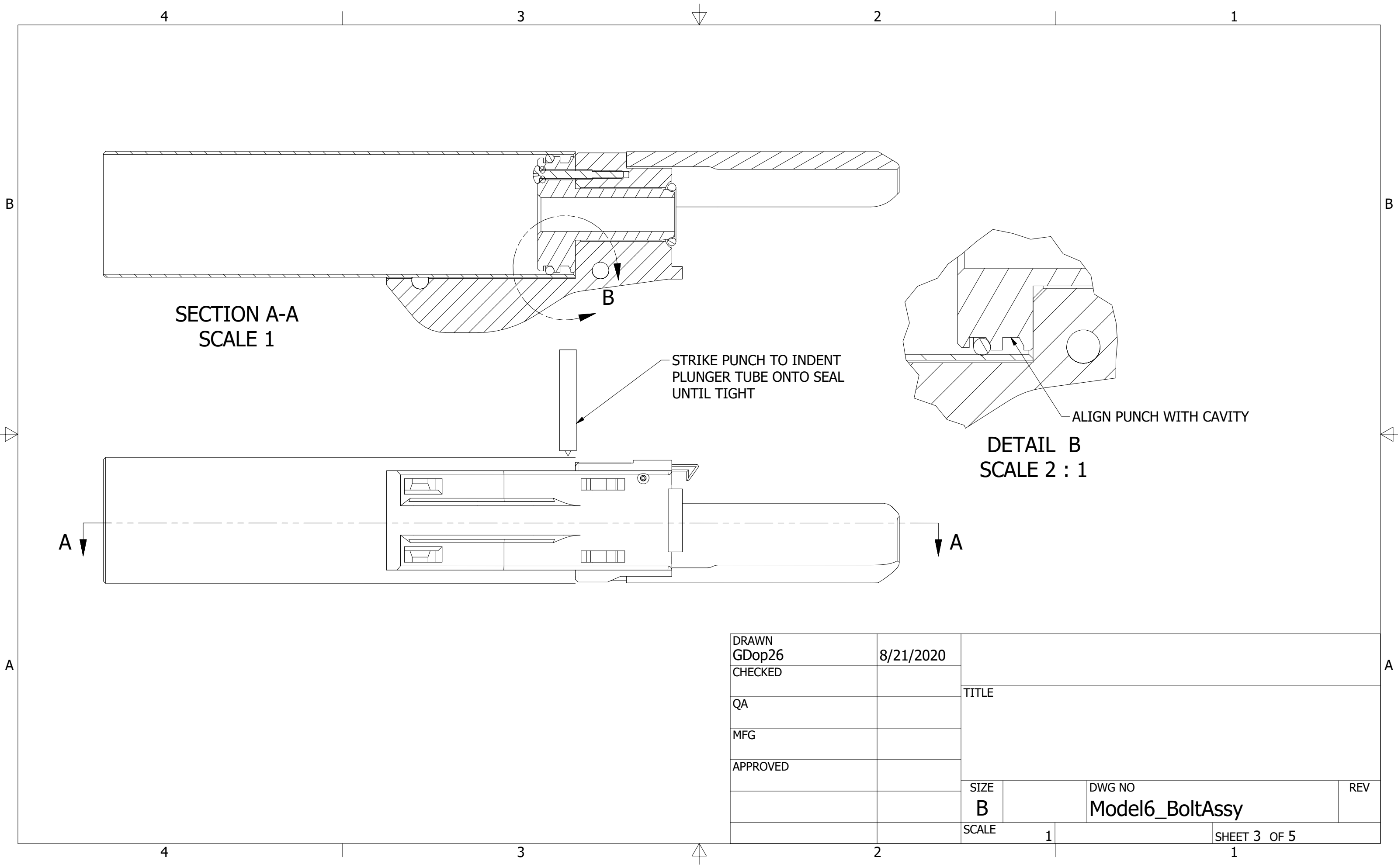
PARTS LIST		
ITEM	QTY	PART NUMBER
1	1	Bolt_R14_V4
6	1	Extractor_Pin_R6_V1
8	1	Extractor_R10_V2
12	1	Extractor_Spring_V2
13	1	Model5_Oring

DRAWN GDop26	8/21/2020	TITLE		
CHECKED				
QA				
MFG				
APPROVED		Model6_BoltAssy		
		SIZE B	DWG NO	REV
		SCALE	2	SHEET 1 OF 5

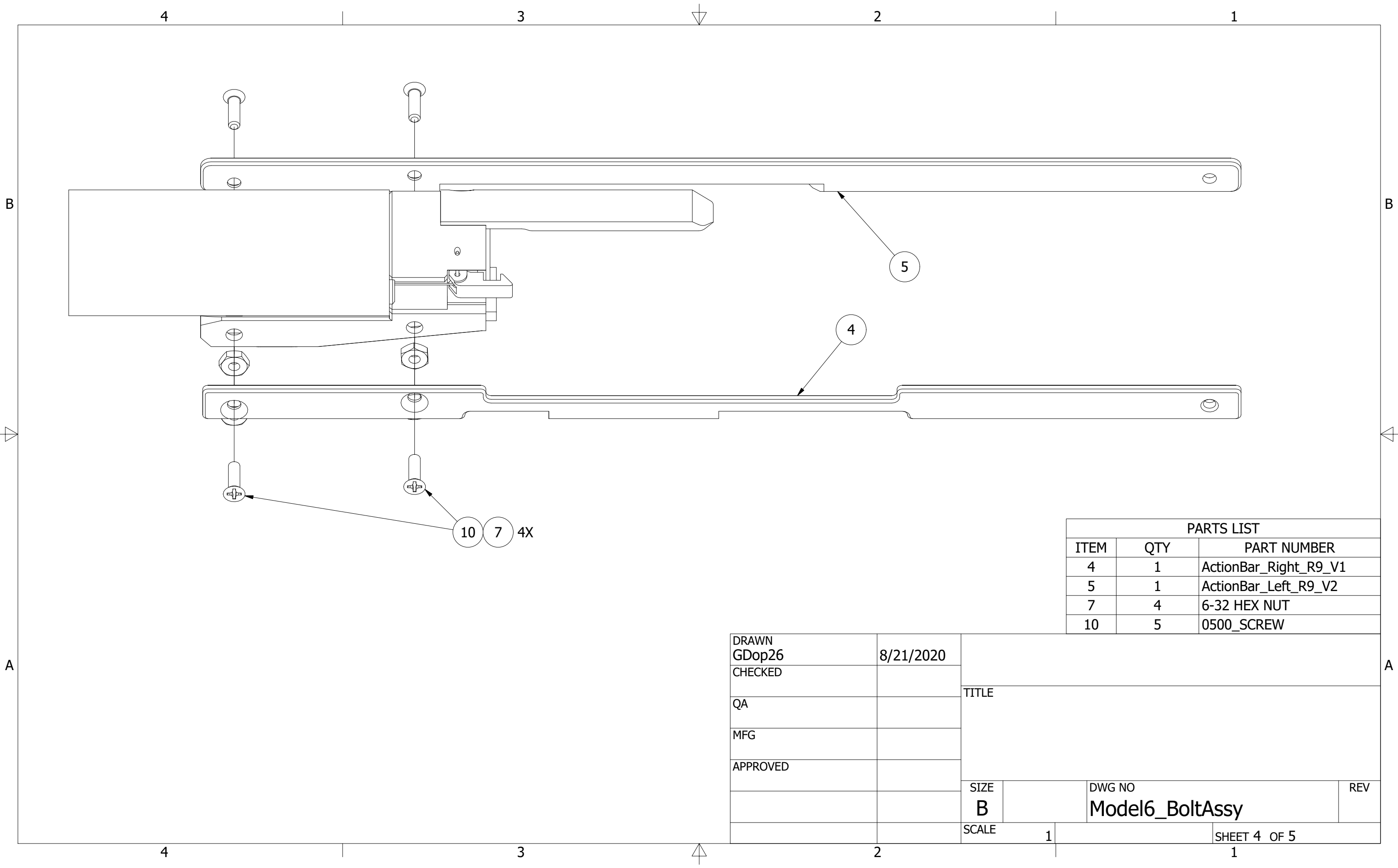


PARTS LIST		
ITEM	QTY	PART NUMBER
2	1	PlungerTube_R9_V1
3	1	PlungerSeal_R16_V3
9	2	9452K880_OIL-RESISTANT BUNA-N MULTIPURPOSE O-RING
10	5	0500_SCREW
11	1	Shell_Aligner_R8_V9
19	1	TinyORing
20	1	4-40_PanHead_Screw

DRAWN GDop26	8/21/2020	TITLE		
CHECKED				
QA				
MFG				
APPROVED		Model6_BoltAssy		
		SIZE B	DWG NO	REV
		SCALE 1.5	SHEET 2 OF 5	

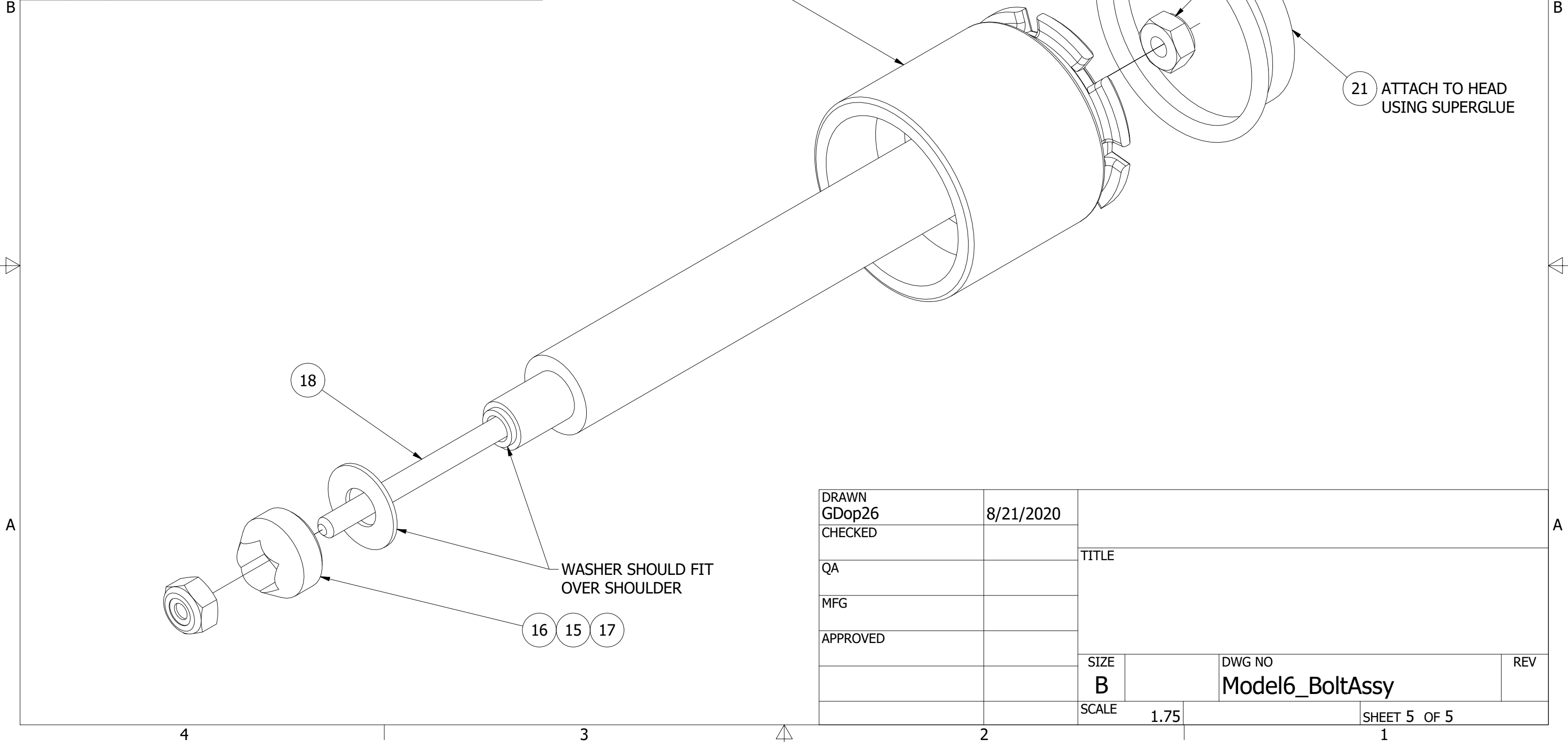


DRAWN GDop26	8/21/2020	TITLE		
CHECKED				
QA				
MFG				
APPROVED		SIZE B	DWG NO Model6_BoltAssy	REV
		SCALE 1	SHEET 3 OF 5	



DRAWN	GDop26	8/21/2020	TITLE		
CHECKED					
QA					
MFG					
APPROVED			SIZE B		
			SCALE	1	
				DWG NO	Model6_BoltAssy
				REV	

PARTS LIST		
ITEM	QTY	PART NUMBER
9	2	9452K880_OIL-RESISTANT BUNA-N MULTIPURPOSE O-RING
14	1	Plunger_Head_R11_V2
15	1	PlungerWasher_V1
16	1	Rod_Cap_R1_V1
17	2	Locknut_6_32
18	1	PlungerRob_V1
21	1	Plunger Shock Pad



DRAWN GDop26	8/21/2020	TITLE		
CHECKED				
QA				
MFG				
APPROVED		SIZE B	DWG NO Model6_BoltAssy	REV
		SCALE 1.75	SHEET 5 OF 5	